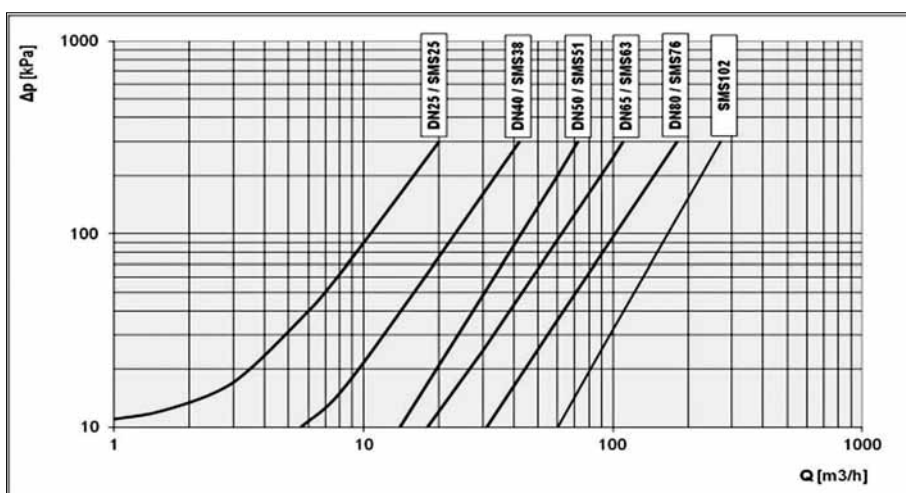


Technische Daten

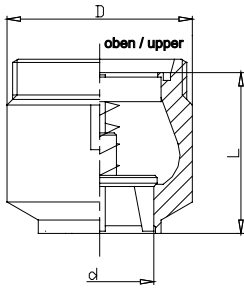
Technical Data Overview

Nennweiten DIN DN25 - DN 80 / SMS DN25 - DN102 / Zoll 1" - 4"		Nominal sizes DIN DN25 - DN 80 / SMS DN25 - DN102 / Inch 1" - 4"	
Werkstoffe Alle Edelstahlteile: AISI 316L (1.4404) O-Ring Dichtungen: EPDM, FPM (Viton®)		Materials All stainless steel parts: AISI 316L (1.4404) O-ring seals: EPDM, FPM (Viton®)	
Oberflächen Produktberührend: $Ra \leq 0,8 \mu\text{m}$ ($Ra \leq 32\mu\text{in}$)		Surfaces In contact with product: $Ra \leq 0,8 \mu\text{m}$ ($Ra \leq 32\mu\text{in}$)	
Temperatur Betriebstemperatur: 110°C (230°F) Kurzzeitig: 140°C (284°F)		Temperature Operating temperature: 110°C (230°F) Short-term: 140°C (284°F)	
Druck Betriebsdruck: 20 bar max. (290 psi max.)		Pressure Operating pressure: 20 bar max. (290 psi max.)	
Ventilanschlussarten Schweißende / Gewinde: DIN 11850 / DIN 11851 Gewinde: DIN 11851, SMS 1145 Clamp: Tri-Clamp		Valve connection Welded ends / Male ends: DIN 11850 / DIN 11851 Male ends: DIN 11851, SMS 1145 Clamp connection: Tri-Clamp	

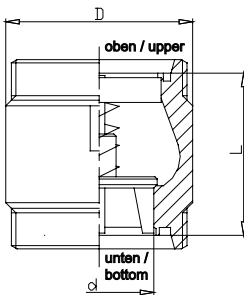


Leistungsdiagramm LIAG® Rückschlagventil
Druckverlust Δp / Volumenstrom Q
Performance chart LIAG® non return valve
pressure drop Δp / volume flow Q

RÜCKSCHLAGVENTIL NON RETURN VALVE



4-fach geführte metallische Tellerdichtung
4-way controlled metallic disk seal



4-fach geführte metallische Tellerdichtung
4-way controlled metallic disk seal

DIN

Rückschlagventil, 1x Schweißende DIN 11850 - 1x Gewinde DIN11851

Non return valve, 1x welded end DIN 11850 -
1x male end DIN11851

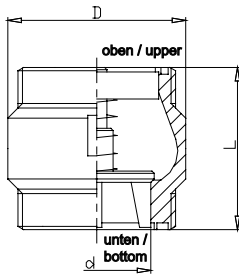
DN	Typ Type	Ø d	Ø D	L
25	25D61A	22	57	60
40	40D61A	36	70	62
50	50D61A	48,5	83	72
65	65D61A	60,5	100	82
80	80D61A	72	115	92

Rückschlagventil, 2x Gewinde DIN 11851

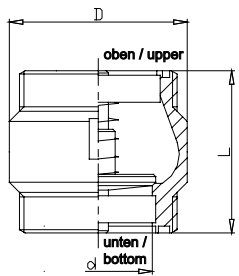
Non return valve, 2x male ends DIN 11851

DN	Typ Type	Ø d	Ø D	L
25	25D62A	22	57	60
40	40D62A	36	70	62
50	50D62A	48,5	83	72
65	65D62A	60,5	100	82
80	80D62A	72	115	92

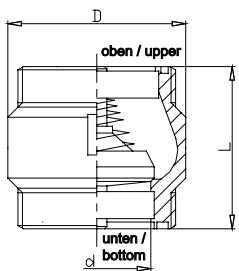
RÜCKSCHLAGVENTIL NON RETURN VALVE



4-fach geführte metallische Tellerdichtung
4-way controlled metallic disk seal



1-fach geführte Metalltellerdichtung
Single controlled metallic disk seal



1-fach geführte Teflontellerdichtung
Single controlled teflon disk seal

SMS

Rückschlagventil, 2x Gewinde SMS 1145 Non return valve, 2x male ends SMS 1145

DN	Typ Type	Ø d	Ø D	L
25	25S62A	25	50	60
38	38S62A	39	65	62

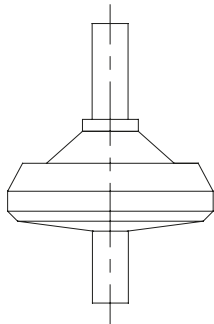
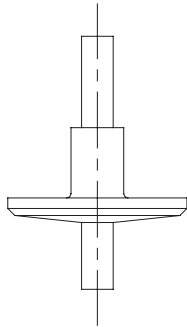
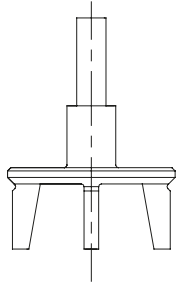
Rückschlagventil, 2x Gewinde SMS 1145 Non return valve, 2x male ends SMS 1145

DN	Typ Type	Ø d	Ø D	L
51	51S62B	48	79	72
63	63S62B	60	90	82
76	76S62B	71	110	92
102	102S62B	94	141	136

Rückschlagventil, 2x Gewinde SMS 1145 Non return valve, 2x male ends SMS 1145

DN	Typ Type	Ø d	Ø D	L
51	51S62C	48	79	72
63	63S62C	60	90	82
76	76S62C	71	110	92

RÜCKSCHLAGVENTIL NON RETURN VALVE



ERSATZTEILE FÜR DIN UND SMS SPAREPARTS FOR DIN AND SMS

4-fach geführte metallische Tellerdichtung 4-way controlled metallic disk seal

DN			Typ Type
25	25	1"	25SD621A
40	38	1,5"	38-40SD621A
50			50D621A
65			65D621A
80			80D621A

Für Typen Rückschlagventile: XXD61A / XXD62A / XXS62A
For types of non return valves: XXD61A / XXD62A / XXS62A

1-fach geführte metallische Tellerdichtung 1-way controlled metallic disk seal

DN			Typ Type
	51	2"	51S621B
	63	2,5"	63S621B
	76	3"	76S621B
	102	4"	102S621B

Für Typ Rückschlagventil: XXS62B
For type of non return valve: XXS62B

1-fach geführte Teflontellerdichtung 1-way controlled teflon disk seal

DN			Typ Type
	51	2"	51S621C
	63	2,5"	63S621C
	76	3"	76S621C

Für Typ Rückschlagventil: XXS62C
For type of non return valve: XXS62C

Feder, zylindrisch Spring, cylindrical

DN			Typ Type
25	25	1"	25SD603B
40	38	1,5"	38-40SD603B
50	51	2"	50-51SD603B
65	63	2,5"	63-65SD603B
80	76	3"	76-80SD603B
	102	4"	102S603B

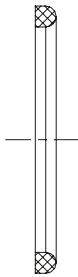
Für Typen Rückschlagventile: XXD61A / XXD62A / XXS62A / XX62B
For types of non return valves: XXD61A / XXD62A / XXS62A / XX62B

Feder, konisch Spring, conical

DN			Typ Type
	51	2"	51S622C
	63	2,5"	63S622C
	76	3"	76S622C

Für Typ Rückschlagventil: XXS62C
For type of non return valve: XXS62C

RÜCKSCHLAGVENTIL NON RETURN VALVE



Dichtring, DIN 11851-G, oben und unten Upper and bottom seal ring DIN 11851-G

DN		Typ Type	
		EPDM	FPM (Viton®)
25		25D01003-E	25D01003-V
40		40D01003-E	40D01003-V
50		50D01003-E	50D01003-V
65		65D01003-E	65D01003-V
80		80D01003-E	80D01003-V

Für Typen Rückschlagventile: XXD61A / XXD62A
For types of non return valves: XXD61A / XXD62A



Dichtring NBR bzw. EPDM, oben Upper seal ring NBR resp. EPDM

DN			Typ Type
25	25	1"	25SD623-N
40	38	1,5"	38-40SD623-N
50	51	2"	50-51SD623-N
65	63	2,5"	63-65SD623-N
	76	3"	76S623-N
	102	4"	102S31004-E

Für Typen Rückschlagventile: XXD61A / XXD62A / XXS62A / XXS62B / XXS63C
For types of non return valves: XXD61A / XXD62A / XXS62A / XXS62B / XXS63C



Dichtring, SMS 1145, unten Bottom seal ring, SMS 1145

DN		Typ Type	
		EPDM	FPM (Viton®)
25	1"	25S31004-E	25S31004-V
38	1,5"	38S31004-E	38S31004-V
51	2"	51S31004-E	51S31004-V
76	3"	76S31004-E	76S31004-V
102	4"	102S31004-E	102S31004-V

Für Typen Rückschlagventile: XXS62A / XXS62B / XXS63C
For types of non return valves: XXS62A / XXS62B / XXS63C

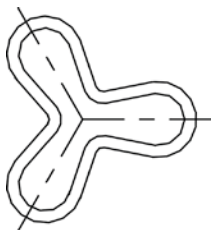
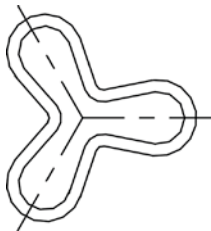


Dichtring NBR, unten Bottom seal ring NBR

DN		Typ Type
63	2,5"	63S623-N

Für Typen Rückschlagventile: 63S62B / 63S62C
For type of non return valve: 63S62B / 63S62C

RÜCKSCHLAGVENTIL NON RETURN VALVE



Führungsring oben Upper guiding ring

DN			Typ Type
25	25	1"	25SD601Y
40	38	1,5"	38-40SD601Y
50	51	2"	50-51SD601Y
65	63	2,5"	63-65SD601Y
80	76	3"	76-80SD601Y
	102	4"	102S601Y

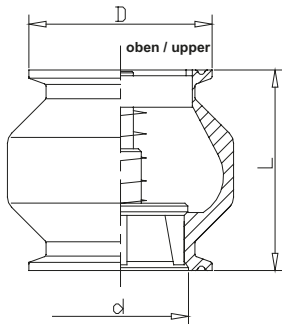
Für Typen Rückschlagventile: XXD61A / XXD62A / XXS62A / XXS62B / XXS62C
For types of non return valves: XXD61A / XXD62A / XXS62A / XXS62B / XXS62C

Führungsring unten Bottom guiding ring

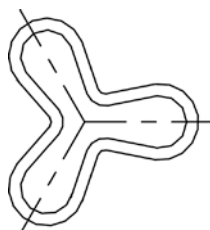
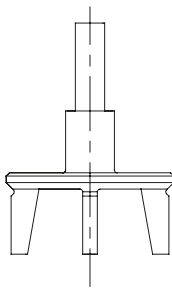
DN			Typ Type
	51	2"	51S601A
	63	2,5"	63S601A
	76	3"	76S601A
	102	4"	102S601A

Für Typen Rückschlagventile: XXS62B / XXS62C
For types of non return valves: XXS62B / XXS62C

RÜCKSCHLAGVENTIL NON RETURN VALVE



4-fach geführte metallische Tellerdichtung
4-way controlled metallic disc seal



TC-CLAMP

Rückschlagventil, 2x TC-Clamp Non return valve, 2x TC-Clamp

DN	Typ Type	Ø d	Ø D	L	p [bar]
1"	25C63A	22,2	50,5	60	0,18
1,5"	38C63A	34,9	50,5	62	0,12
2"	51C63A	47,5	64	70	0,08
2,5"	63C63A	60,2	77,5	80	0,05
3"	76C63A	72,9	91	90	0,05
4"	102C63A	97,6	119	138	0,05

ERSATZTEILE FÜR TC-CLAMP SPAREPARTS FOR TC-CLAMP

4-fach geführte metallische Tellerdichtung 4-way controlled metallic disc seal

DN	Typ Type
1"	25SD621A
1,5"	38C632A
2"	51C632A
2,5"	63C632A
3"	76C632A
4"	102C632A

Feder, zylindrisch Spring, cylindric

DN	Typ Type
1"	25SD603B
1,5"	38-40SD603B
2"	50-51SD603B
2,5"	63-65SD603B
3"	76-80SD603B
4"	102S603B

Führungsring oben Upper guiding ring

DN	Typ Type
1"	25SD601Y
1,5"	38C633A
2"	51C633A
2,5"	63C633A
3"	76C633A
4"	102C633A